

Ticket Information



Hualien Route 1-Day pass Price **250** NT



Hualien & Taroko Route 2-Day Pass Price **450** NT



Hualien & Yuchang Fengbin Route 2-Day Pass Price **450** NT

Taiwan Shuttle Bus+Taiwan Tour Bus



Merry Tour



Boss Tour



Taiwan Tour Bus



Hualien Route & Bike Trip 1-Day pass Price **350** NT



Hualien, Taroko & Huilan East Coast Route 3-Day pass Price **988** NT

- | | |
|------------|--|
| Merry Tour | Taiwan Shuttle Bus Hualien Route+ Taiwan Tour Bus Hualien Secret Scenery Tour |
| Boss Tour | Taiwan Shuttle Bus Hualien Route+ Taiwan Tour Bus Yuli Chike Mountain Tour |
| Boss Tour | Taiwan Shuttle Bus Hualien Route+ Taiwan Tour Bus Walami Historic Trail Tour |
| Boss Tour | Taiwan Shuttle Bus Hualien Route+ Taiwan Tour Bus Fuli Liushidan Mountain Tour |

Gourmet food in the East Rift Valley

Papaya milk

The papaya milk sold for more than 5 decades near Liyu Lake is made from fresh milk from Ruisui without adding any sugar, water, and ice. Unfiltered, you can taste the mellowness and sweetness of both papaya and milk. You can also eat the shreds of papaya's flesh too.

Position: **South Liyu Lake Recreation Area**



Golden Clam

Clam is good for your liver, rich in protein, and low in purine, sodium, and cholesterol. When the clams grow up in clear water, they are gold in color. The clearer the water, the more gold in color. Therefore, they call the clams cultivated in Shoufeng Township, Hualien, "Golden Clam." There are also nutritious food or nutritional supplements made with "Golden Clam."

Position: **Lichuan Aquafarm**



Panna cotta

Chao Feng Ranch cultivates cows imported from the Netherlands. Grown up in a quality environment, they produce quality milk and dairy products. The farm uses milk produced there to make ice-cream and fresh cheese with their own special recipe. The cheese is rich with the flavor of milk and smooth. When visiting the ranch, visitors are recommended to taste these delicious dairy products, which can be shipped to your home by courier service as well.

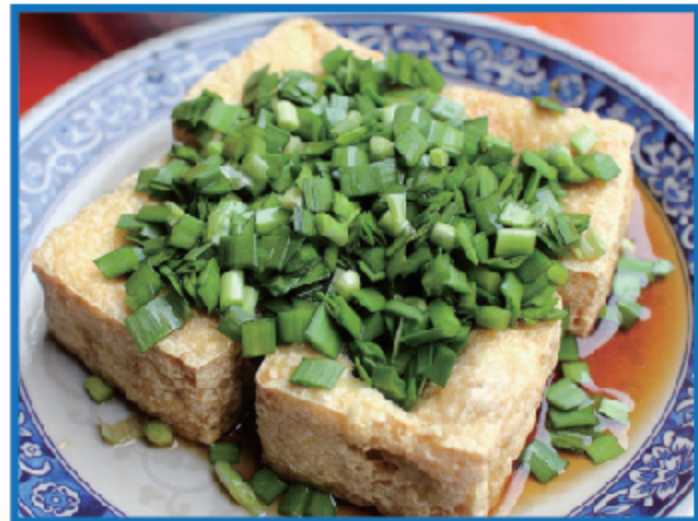
Position: **Shin Kong Chao Feng Leisure Farm**



Leek and Stinky Tofu

The special local delicacy in Fenglin-leek and stinky tofu – is a favorite dish of the local people. The deep-fried stinky tofu is aromatic and crunchy. But it is tender inside. Served with raw leek, its aroma and taste are wonderful.

Position: **Fenglin Station**



Lemon juice

The milk lemon juice is made with whole lemons, including skins, grown without using pesticide. After the lemon is squashed in the juice machine, it is served with slowly-cooked syrup with sugar made by Taiwan Sugar. Then, a proper ratio of condensed milk is added according to the secret recipe to complete this cool and thirst quenching milk lemon juice.

Position: **Fenglin Station**



Coffee

Lintian Mountain Community Coffee was rebuilt from the red cypress quarters of senior officers during the Japanese rule. Although its decorations are modern, it still retains the appearance of the simplicity of old Japanese houses. Visitors should follow the Japanese way to take off their shoes when entering the house. It is nice to enjoy a cup of coffee and the landscapes of Hualien in the afternoon sun.

Position: **Lintian Mountain Forestry Center**



Sugar factory shredded ice

Hualien Sightseeing Sugar Factory was an important sugar factory in east Taiwan in the early times. In 2002, it was changed into a Sightseeing Sugar Factory. When visiting here, visitors should not miss the shredded ice dishes here. The most famous ones are Red Bean and Milk Shredded Ice and Moon Shredded Ice, both of which are popular snacks here. If you find them tasty, you many like to buy some ice cream or ice-lolly to take home. They can be shipped to your door by courier service.

Position: **Hualien Sugar Factory**



Information Station

Hualien Route Bus Station	Information Station
Hualien Station (Tourism Center)	Hualien Wow Hostel +886-38330186
Lichuan Aquafarm	Lichuan Aquafarm +886-38651333
Hualien Sugar Factory	Hualien Sugar Factory +886-38704125
Shin Kong Chao Feng Leisure Farm	Shin Kong Chao Feng Ranch & Resort +886-38772666

Taiwan Tourist Shuttle Logo



Taiwan Tourist Shuttle Logo



Taiwan Tourist Shuttle Bus Livery



Taiwan Tourist Shuttle Stop

Contact Information

East Rift Valley National Scenic Area Administration, Tourism Bureau, MOTC
TEL: +886-800000115

Management Department Headquarters and Hegang Tourism Center	TEL: +886-38875306
Hualien Station (Tourism Center)	TEL: +886-38360634
Liyu Lake Management Station and Visitor Center	TEL: +886-38641691
Fenglin Station	TEL: +886-38762004
Guangfu Station	TEL: +886-38704143
Taroko Bus	TEL: +886-800827656

Other services

◎ Low floor buses are provided throughout the trip and every bus has at least one wheelchair seat per bus.

◎ You can always find the right place for the bus stops in the Hualien Route. Just scan the QR Code.

- Advisory organization : **Taiwan** Tourism Bureau, M.O.T.C.
- Organizer : **East Rift Valley National Scenic Area Administration, Tourism Bureau, MOTC**
- Co-organizer : **Taroko Bus**
- Planning & Customer service : **Collaboration Digital**
TEL : +886-22321-5955



花蓮線

Hualien Route



Online Ticket



Taiwan Tourist Shuttle Hualien Route



Guide to Scenic Spots

接受交通部觀光局補助(分攤配合)廣告

Taiwan 833 行

縱谷花蓮線

Hualien Route

Ji-An Hakka Artist Village

Ji-An Hakka Artist Village is a new performance space. It educates people with the values of history in the progress of time through art. More importantly, it is a place that touches people's hearth through people's gathering.



Cingsio Temple

Cingsio Temple is a Class 3 historic monument in Hualien. Built during Japanese rule, it is a only Japanese style temple preserved in good condition in Taiwan.



Liyu Lake

Liyu Lake was named after Liyu Mountain that is located east of the Lake, and it can be divided into Southern Lake and Northern Lake. It is a popular scenic area in Hualien, offering a circular walking trail around the lake, a forest trail, and other diverse leisure activities. During firefly mating season, sparkling dots of fireflies light up the pitch-black Liyu Lake, attracting schools, families, and other tourists to all visit here for an ecological trip.



Lichuan Aquafarm

The gold clams are cultivated with the water from natural fountains. Visitors can experience the rural fun of catching clams as well as tasting the seafood dishes there.



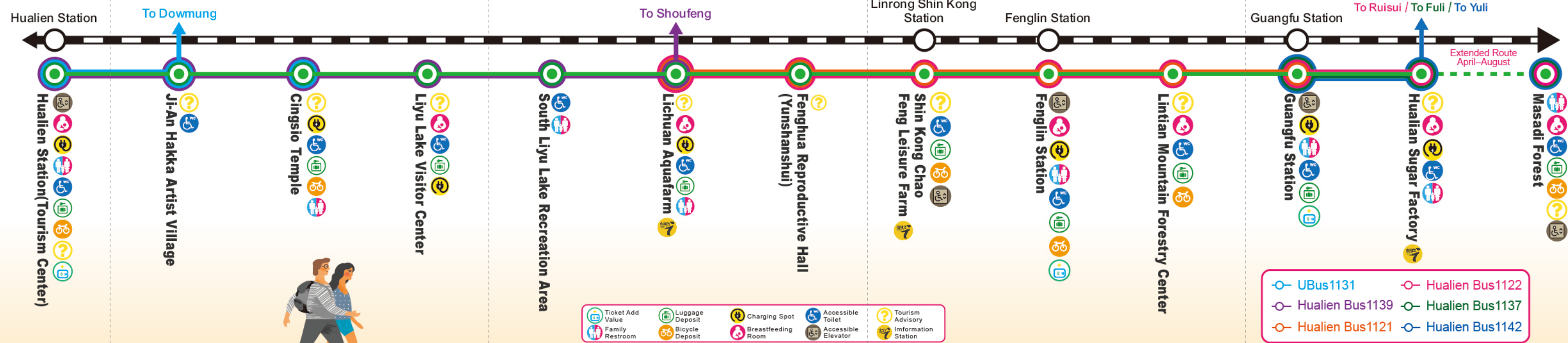
Fenghua Reproductive Hall (Yunshanshui)

The Yun Shan Shui Ecological Park nearby is famous for its Dream Lake. In the Park, there are many different kinds of plants, such as common cypress, flamboyant tree, and water plants. On the green grasslands, there are wild animals running around, constituting a stunning and natural community.



Transfer info

Hualien Route Bus Station	Public Transportation	Alighting Point (Get off the bus at :)	Walking time to the scenic spot	Transfer info QR Code
Ji-An Hakka Artist Village	UBus1131 Hualien Bus1139	Qingfeng Post Office	About 400 m About 5 minutes of walking.	
Cingsio Temple	UBus1131 Hualien Bus1139	Ji'an Township Station	About 280 m About 4 minutes of walking.	
Liyu Lake Visitor Center	Hualien Bus1139	Liyu Lake	About 800 m About 10 minutes of walking.	
South Liyu Lake Recreation Area	Hualien Bus1139	Liyu Lake	Direct Bus	
Lichuan Aquafarm	Hualien Bus1121 Hualien Bus1122 Hualien Bus1139	Shoufeng Station	About 1.6 km About 20 minutes of walking.	
Fenghua Reproductive Hall (Yunshanshui)	Hualien Bus1121 Hualien Bus1122	Fengtian Station	About 4 km About 50 minutes of walking.	
Shin Kong Chao Feng Leisure Farm	Taiwan Railways Hualien Bus1121 Hualien Bus1122	Linrong Shin Kong Station Shin Kong Chao Feng Leisure Farm	About 64 m About 1 minutes of walking. About 1.6 km About 22 minutes of walking.	
Lintian Mountain Forestry Center	Hualien Bus1121 Hualien Bus1122	Senrong Vil Station	About 2.6 km About 30 minutes of walking.	
Hualian Sugar Factory	Hualien Bus1122 Hualien Bus1137 Hualien Bus1142	Guangfu Sugar Factory Station	About 260 m About 3 minutes of walking.	
Masadi Forest	Hualien Bus1122 Hualien Bus1137 Hualien Bus1142	Dafu Station	About 3.3 km About 40 minutes of walking.	



Shin Kong Chao Feng Leisure Farm

Occupying the area of 18 hectares, installed with recreational facilities, grazing areas, eco-bird garden, parrot gardens, etc., it is a lively and leisure farm. The cheese and milk ice cream produced and made by it are visitors' favorite.



Lintian Mountain Forestry Center

Nicknamed "Small Shanghai". Once it was one of the four major forest stations in Taiwan. The rails and trains used for transporting timber are still preserved in the park. Lintian Mountain Café in the park is also highly recommended. It is nice to have a cup of smooth and mellow coffee in a café permeated with the wood's aroma.



Masadi Forest

Being the first forest park on the plain in Taiwan, visitors can gaze at flowers during the spring, look for fireflies and birds in the summer, and watch maple leaves during autumn and winter. In different seasons of the year, the park shows different charm. Visitors can cycle along the bikeway to enjoy forest bath with leisure.



Hualian Sugar Factory

It was built during the Japanese rule, also called the Guangfu Sugar Factory." In the sugar factory, shredded ice desserts of different flavors are sold. Visitors can also take its DIY sessions or bike around the park. Japanese style accommodation is also provided for visitors.

